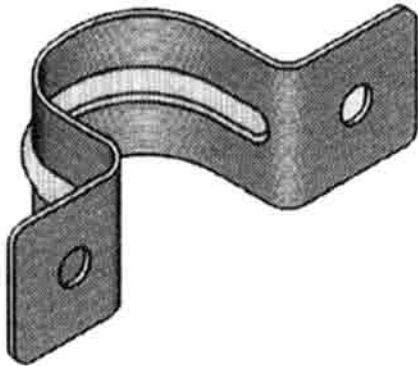


GREENHOUSE HARDWARE

TWO-HOLE STRAP



| Stock No. | Size | Price/Each |
|-----------|------------------|------------|
| 26011060 | fits 1 3/8" tube | \$.70 |
| 26011061 | fits 1 5/8" tube | .70 |
| 26011060 | fits 2" tube | .70 |
| 26011060 | fits 3 3/8" tube | .92 |

BRACE BANDS



Galvanized steel brace band used for tussing and bracing.

| Stock No. | Size | Price/Each |
|-----------|--------|------------|
| 26011030 | 1 3/8" | \$.65 |
| 26011031 | 1 5/8" | .67 |
| 26011032 | 2" | .77 |
| 26011033 | 2 3/8" | .82 |

ANCHOR DRIVE



Drive anchors without damaging the anchor pipe. Installs up to 13 Ga. pipe. Used with a sledge hammer.

| Stock No. | Size | Price/Each |
|-----------|----------------|------------|
| 26011071 | 1 1/4 & 1 3/8" | \$6.68 |
| 26011072 | 1 1/2 & 1 5/8" | 15.05 |

PURLIN PIPE

Can be used for an array of greenhouse projects from adding hanging baskets lines, gable end framing, and bench support frames, etc.

| Stock No. | Size | Price/Each |
|-----------|---|------------|
| 26011200 | 1-3/8" x 21' Swedged Pipe - 17 gauge | \$44.35 |
| 26011202 | 1-5/8" x 20' Swedged Pipe - 14 gauge | \$62.40 |

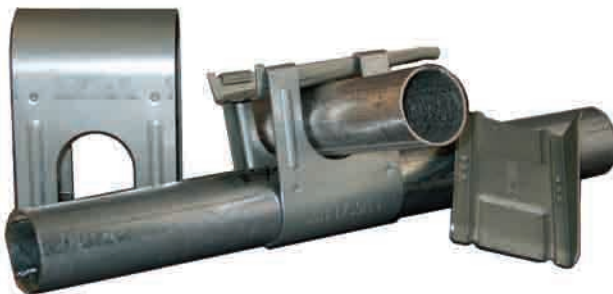
COLUMN & POST BUBBLE LEVEL



Make sure columns and posts are vertical with this simple, easy-to-use bubble level. Works on round or square columns.

| Stock No. | Size | Price/Each |
|-----------|------------|------------|
| 26011073 | Post Level | \$11.25 |

LOCKUPS

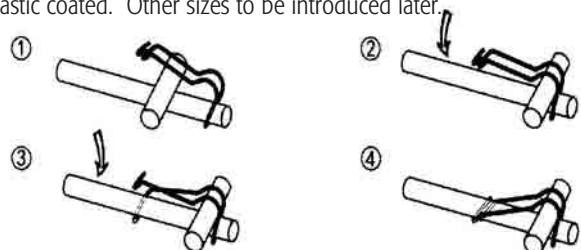


Lock-ups are for connecting purlins and bow connections for extra support or hanging basket lines and also excellent for building bench frames, sidewall ventilation headers and anywhere connecting pipes perpendicular to one another. No screws or electrical tools are needed to attach. Simply insert wedge and hammer wedge all the way in. Disassemble by hammering wedge the opposite way. Made of galvanized steel which does not stretch or expanded like aluminum cross braces. Lock-ups can be used over and over again and again.

| Stock No. | Size | Price/Each |
|-----------|--------------------------|------------|
| 260-6102 | 1.315"x1.315" purlin/bow | \$1.50 ea |
| 260-6104 | 1.315"x1.660" purlin/bow | \$1.50 ea |
| 260-6106 | 1.315"x1.90" purlin/bow | \$1.50 ea. |

SPRING PURLIN/BOW CONNECTOR

Spring purlin/bow connector is an economical way of attaching purlins and bows together for adding 1.315" purlin and 1.315 bows together at 180 degrees. This connector is hot dipped galvanized and plastic coated. Other sizes to be introduced later.

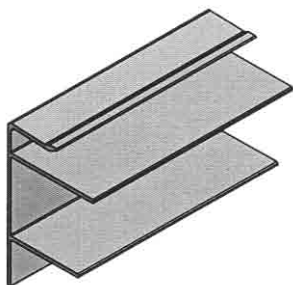


| Stock No. | Size | Price/Each |
|-----------|-----------------------------|------------|
| 260-6120 | Spring Purlin/Bow connector | \$0.90 |

For glazing and accessories, see Greenhouse Covering Section pages 117-124.

BENCHING PARTS & HARDWARE

ALUMINUM F-RAIL EXTRUSION

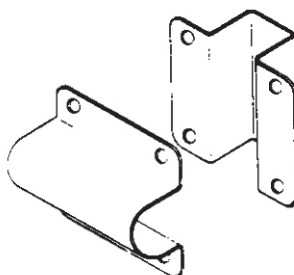


Provides frames for bench tops for plastic bench top, wire mesh top or expanded metal bench top. 1"x1" square galvanized tubing connects one side of the bench to the other side by being inserted every 2' on center (perpendicular to the side of the bench) into this aluminum channel. Secure with #10x5/8" hex head self tapping screw and then lay your bench top on this frame.

This is a very affordable way of building benches for the greenhouse.

| Stock No. | Size | Price/Each |
|------------|--------------------------|------------|
| 215-291706 | 20' Aluminum F Extrusion | \$25.13 |
| 215-291708 | 24' Aluminum F Extrusion | 31.18 |

ALUMINUM BENCH CLAMP



Clamps are designed to securely connect and hold the horizontal bar which attaches to vertical (leg) supports for metal benching. Includes bolts and nuts.

| Stock No. | Size | Price/Each |
|-----------|------|------------|
| | | |

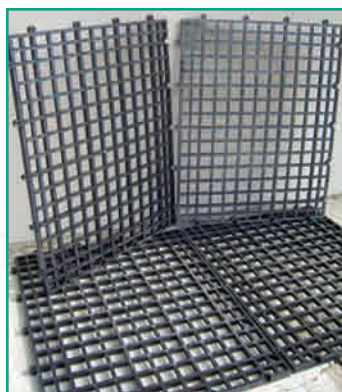
1"X1" SQUARE TUBING



1"x1"x18 gauge galvanized square tubing runs perpendicular to the side of the bench inserted into the Aluminum F Rail every 2' down the entire length of the bench. This product is custom cut to the width of your bench. Square tube attaches to the F Rail with

#10x5/8" Hex Head Self Tapping screws. Custom cut per job, call for pricing.

PLASTIC BENCH TOP



24"x30" interlocking Heavy Duty plastic bench top can be used for any width and length of bench. This material is black, resists mold and mildew, allows great air circulation with large 1"x1" square openings and is easily cut with circular saw. Smooth top surface allows for easy sliding of flats. Compared to other bench tops it is a very affordable alternative. Five pieces to a bundle totaling 25 sq ft per bundle.

| Stock No. | Size | Price/Each |
|-----------|-----------------------------------|----------------|
| 2554002 | 24'X30' Plastic benchtop 5/bundle | \$34.67/bundle |

PLASTIC GREENHOUSE BENCH TOPS



ALSO AVAILABLE



A-V Display Benches are available in several sizes and can be customized with hanging basket rails, full top coverage, or 5" casters for increased productivity.



A-V Display and shipping cart available in several sizes and comes with adjustable shelves and 5" casters.

| Stock No. | Size | Price/Each |
|-----------|---------------------|------------|
| 25530100 | 18" X 36" Bench Top | \$7.29 |
| 25530102 | 24" x 48" Bench Top | 11.49 |

OUTSTANDING FEATURES

- Polypropylene, UV protected.
- Durable and lightweight, no sagging when properly supported.
- Can withstand extremely cold and hot temperatures.
- Installs on any type of frame with screws or pop rivets.
- Easy interlocking assembly.
- Flats, plug trays and pots slide easily over surface, no tipping.
- User friendly and easy to assemble.
- Easy to clean and disinfect.
- Resists weathering, will not rust or decay; corrosion resistant.
- 2' x 4' top accommodates tubular heating systems.
- Non-conductive.
- Inhibits mold & fungus growth.
- 3 year warranty.



ADDITIONAL FEATURES

- Tops can be purchased separately or are available with fixed, folding or removable legs for compact storage.
- Fiberglass frames, stronger, lighter and more durable than wood. 20,000 psi.
- Multi-Tier & Rolling designs are available.

Call for complete custom benching including fiberglass or steel supports and frames. FOB VA

EXPANDED METAL FOR GREENHOUSE BENCHES

Dramex hot dip galvanized and aluminum designed as bench surface for greenhouse plant production. Various styles are available depending on bench framing and loading requirements. The open mesh design allows for free passage of light and air, improved heating efficiency, and keeping bench dry and disease free. Bench life is extended far beyond treated wood and is maintenance free. Dramex is light weight, strong and inexpensive.

- Allows for continuous air flow and heat circulation.
- Open mesh design prevents accumulation of excess moisture or sediment.
- Structurally strong level surfaces yet lightweight for ease of handling.
- Ideal for rolling and mobile benches.
- Manufactured from hot dipped galvanized steel for years of maintenance-free use.
- 13 x 3/4" gauge in widths of 3', 4', 5' and 6' and standard 6' and 8' lengths.
- Galvanized after expansion.



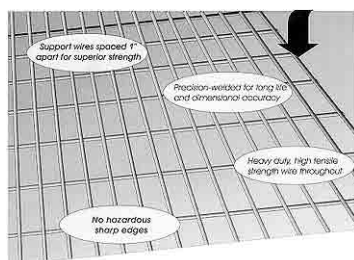
Call for prices and stocked sizes.



BENCHING TOP



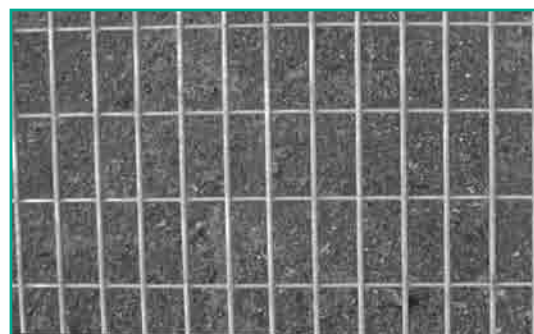
OUTSTANDING FEATURES



- **Long Lasting** - hot dip galvanized after welding ensures years of trouble-free use.
- **Strong** - enough to carry high loads with less flex than expanded metal, wood slats or ordinary lightweight wire.
- **High Quality** -

manufactured from high tensile strength wire to ensure ruggedness and durability.

- **98% Open Space** - air circulates freely. Water, soil and debris can't accumulate.
- **Easy to Install** - panels are pre-cut and delivered flat. Rolls are easy to flatten and cut to length. Fastening is fast and simple. Use staples or horseshoe nails on wood or our Bench Klip for metal frames.
- **Safe** - no sharp edges to cut hands or snag clothing.
- **Also in Vinyl Coated** - Because Bench Mesh is galvanized after welding. Vinyl coating is not necessary to ensure long life.



Call for details and pricing.

BENCH MESH CHANNEL BENCH



Channel Bench tops are the most economical benching available offering the advantages of our expensive benching. Cross support spacing is 18" on center capable of handling the heaviest loads in the nursery and greenhouse. Benches are made of welded wire galvanized after welding producing a long lasting finish free from rust for years of service. The open mesh of the tops provides excellent air flow reducing plant disease. Benches are easy to clean. Benches accommodate bench top heating and irrigation systems by allowing the heat tubes or irrigation pipes run underneath the bench top protecting the pipe from abuse and not interrupting the bench top flat surface.



Assembly is easy! Channel Bench is assembled by attaching the bench top panel to the "U" shaped wire channel supports perpendicular to the panel/bench length every 18". Then assemble the sides of the bench. All parts are preformed and ready for assembly. A clip gun is available as a rental from the manufacturer for use during the assembling process. Channel Bench is available in both stationary and rolling benches in an array of sizes and lengths. Normally concrete block and pipe are used to support bench tops, but legs are also available upon request.

Call your sales representative or customer service for additional details and pricing.

BENCHMASTER®

All Plastic Display Systems

DURABLE AND LONG LASTING

- Will not rot, warp, corrode, stain or absorb liquids like wood or metal.
- Molded from tough, high-density, UV stabilized, post industrial recycled plastic.

UNLIMITED CONFIGURATIONS & SIZES

- Make it any size or shape and move it anywhere.
- Season to season, department to department.

ENHANCED PLANT AND STORE APPEAL

- Benchmaster holds up to 50% more plant material than conventional wood displays.
- Creates professional visual impressions.

“NO MAINTENANCE” DESIGN

- No scraping painting or other fixture maintenance.
- Nonporous surface cleans up by hosing it off.

EASY SNAP-TOGETHER ASSEMBLY

- Lightweight components snap together like building blocks - no tools.
- One person can assemble or change entire floor plans in minutes.

PEOPLE FRIENDLY

- No splinters, no sharp edges.



Multilevel - 3 level - Pyramid



Multilevel - 3 level



CREATE YOUR OWN SINGLE AND MULTI LEVEL DISPLAYS WITH THE FOLLOWING STOCKED PIECES.

| Stock No. | Description | Legs Required | Price |
|--------------|-----------------------|---------------|---------|
| 255-2B2032SP | Benchmaster 2' x 3' | 4 | \$30.98 |
| 255-2B2052SP | Benchmaster 2' x 5.5' | 6 | 54.22 |
| 255-2B2028SP | Benchmaster 2' x 8' | 8 | 61.99 |
| 255-2B2038SP | Benchmaster 3' x 8' | 11 | 92.93 |
| 255-1C2099SP | Collar | | 4.12 |
| 255-1L2012SP | 12" Leg Post | | 4.12 |
| 255-1L2018SP | 18" Leg Post | | 4.93 |
| 255-1L2024SP | 24" Leg Post | | 5.85 |
| 255-1L2030SP | 30" Leg Post | | 7.99 |

Prices listed are for stocked pieces. Contact customer service for stocked items. Pricing for direct shipment varies. Direct shipments F.O.B. MI

BENCHMASTER®

All Plastic Display Systems

WALL/PERIMETER DISPLAYS



Wall Complete - 3 Steps

Wall - 4 Steps

PYRAMID DISPLAYS



Pyramids - 3 Steps



3 Level Pyramid Disp.



3 Level Wall Disp.



2 Level Wall Disp.



2 Level Cart Diagram



Pyramids - 5 Steps

Round - 3 Tier Standard



| Stock No. | Description | Mobile Bars Required | Price | Stock No. | Description | Mobile Bars Required | Price |
|-----------|------------------------|----------------------|----------|------------|-------------------------------|----------------------|----------|
| BC36372SC | 2 Level Cart 24" x 36" | 2 | \$202.54 | SM362403W | Tri Pyramid 36" | 2 | \$129.22 |
| BC66372SC | 2 Level Cart 24" x 66" | 3 | 269.69 | SM662403W | Tri Pyramid 66" | 3 | 217.78 |
| BC96372SC | 2 Level Cart 24" x 96" | 4 | 311.88 | SM962403W | Tri Pyramid 96" | 4 | 258.72 |
| SM362402W | 2 Tiered Wall Unit 36" | 2 | 81.26 | SM363605W | Quint Pyramid 36" | | 222.11 |
| SM662402W | 2 Tiered Wall Unit 66" | 3 | 136.25 | SM663605W | Quint Pyramid 66" | | 371.49 |
| SM962402W | 2 Tiered Wall Unit 96" | 4 | 162.27 | SM963605W | Quint Pyramid 96" | | 444.65 |
| SM363603W | 3 Tiered Wall Unit 36" | 2 | 147.38 | BR483602TR | 2-Tiered Round 30" & 48" | | 264.53 |
| SM663603W | 3 Tiered Wall Unit 66" | 3 | 242.49 | BR484503T | 3-Tiered Round 30", 36" & 48" | | 207.15 |
| SM963603W | 3 Tiered Wall Unit 96" | 4 | 289.96 | BH3084203 | Plant Hanging System | | 33.18 |

Prices F.O.B. MI. This is a small listing of the many displays available. Contact customer service for information on other displays available and Benchmaster's FREE CAD Layout and Design Service.



ALUMINUM DOUBLE SLIDING GREENHOUSE DOORS



Finally there is a reasonably price greenhouse door that can be covered with poly that does not cost an arm and a leg. This all aluminum door has wire lock base co-extruded into the frame of the door for an air tight covering. Tracks are galvanized steel for holding the door against the gable end frame and center ground track can be removed for rolling whatever into the greenhouse. This smooth sliding door can be separated to make 2 -4'x6'6" doors independent of each other. Doors can be mounted on the inside or outside of the greenhouse.

DURABLE AND LONG LASTING

- Stable, light and rustless.
- Smooth and reliable sliding due to top sliding track design.
- Knockdown bottom tracks in three sections, catering for easy vehicle transportation.
- Convenient on-site installation.
- Materials: Galvanized steel plate; aluminum alloy.

| Stock No. | Description | Price |
|-----------|--|----------|
| 260-6010 | 2 - 4' x 6'6" sliding greenhouse doors | \$360.00 |

HEAVY DUTY DOUBLE SLIDING DOORS

This Heavy Duty 9.84' (2-4.92' doors) x 7.87' aluminum door frame covered with 8mm PCSS on the top panel and heavy duty aluminum panel on the lower panel sliding door is great for providing more excess on large gable end greenhouses. Galvanized top and bottom track hold doors against the gable end frame- lower track can be removed for transporting vehicles into the greenhouse. Door can be mounted on inside or outside of the gable end and can even be split in half to make 2-4.92'x7.87' single doors. This high quality durable heavy duty doors promises to perform flawlessly year after year.



| Stock No. | Description | Price |
|-----------|---------------------------------------|----------|
| 260-6012 | 9.84' (2-4.92') x 7.87' Sliding Doors | \$860.00 |

SWING & SLIDING GREENHOUSE DOORS



Swing doors are made with 1-1/2"x4-1/2" Square aluminum tubing which allows for a commercial keyed lever latch, door stop and bottom door sweep. Double hung doors included standard keyed level latch, two door stops, one pull chain bolt, one cane bolt and two door sweeps. 8mm PCSS is standard glazing. Custom door sizes and coverings available upon request.



| Stock No. | Description | Price | Stock No. | Description | Price |
|-----------|-------------|----------|-----------|-------------|----------|
| 260-5100 | 3x7' Single | \$454.30 | 260-5110 | 4x7' Single | \$504.74 |
| 260-5102 | 3x8' Single | 476.99 | 260-5112 | 4x8' Single | 529.81 |
| 260-5104 | 3x7' Double | 879.79 | 260-5114 | 4x7' Double | 975.04 |
| 260-5106 | 3x8' Double | 922.99 | 260-5116 | 4x8' Double | 1029.60 |



Sliding doors are made of 1"x3" aluminum tubing and include brushes, track and rollers, two pull handles, one stay roller, door guide and commercial key lever latch. Double sliding include same but four pull handles, two stay rollers and one cane bolt. 8mm PCSS is standard glazing.

| Stock No. | Description | Price |
|-----------|-------------------|----------|
| 260-5150 | 3x7' Single slide | \$460.52 |
| 260-5152 | 3x8' Single slide | 477.87 |
| 260-5154 | 3x7' Double slide | 864.77 |
| 260-5156 | 3x8' Double slide | 907.72 |
| 260-5160 | 4x7' Single slide | 512.95 |
| 260-5160 | 4x7' Single slide | \$512.95 |
| 260-5164 | 4x7' Double slide | 980.43 |
| 260-5166 | 4x8' Double slide | 1,027.34 |

Custom doors available upon request call for information. FOB Manufacturer

KOOL RAY CLASSIC

Kool Ray Classic is specifically designed to lower inside greenhouse temperatures during the warmer spring and summer growing seasons. During the course of the year, Kool Ray Classic's environmentally friendly ingredients will slowly wear off (weather permitting) allowing for increased light levels as the daylight decreases. Classic works best when spray applied.



X-TRA STICK



Adhesive Additive - When added to Kool Ray Ultra it will increase adhesion, wear, and overall life of the shade. Primarily used for shading of glass greenhouses. Can be used for plastic but use caution due to possible removal problems.



IMPORTANT:

Before diluting with water, power or drill mix Kool Ray concentrate until creamy smooth (about 45 seconds). Then dilute with water. Otherwise, concentrate will not mix completely into water, may clog spray equipment, and not provide an even shade.

USER TIPS

KOOL RAY CLASSIC

Application for Exterior Use: Kool Ray™ can be applied by brush, roller or spray. Spray application is method preferred. By using the spray method, generally a more consistent amount will be applied which will result in a more uniform shade density and more even wear. Spray tip sizes of .03, .04, .06, .08 and angles of 63° - 80° works well.

Dilution: Standard dilution rate is 8 parts water to 1 part Kool Ray.™ For a denser shade, several lighter, more diluted coats are recommended over a single, less diluted, heavy coat. A heavy coat can lead to flaking and less even wear.

Coverage: Coverage will vary according to method of application, applicator and dilution ration. Spray will normally provide best coverage of approximately 175 sq. ft. per gallon after dilution. Example: 1:8 reduction = 9 gallons. 9 x 175 = 1575 sq. ft. per gallon of Kool Ray Classic at a 8 to 1 ratio.

Longevity: Best to apply in the morning, after dew has lifted, or late afternoon. Application within 12 to 24 hours of rain may result in premature wash off. Frost will also loosen shade. Application during hot, midday sun will tend to bake the shade more quickly, thus enhancing durability. In addition, plastic glazing heated by the sun and/or worn by the weather is more porous and will promote greater adhesion. Rate of wear is also dependent on weather conditions.

X-TRA STICK

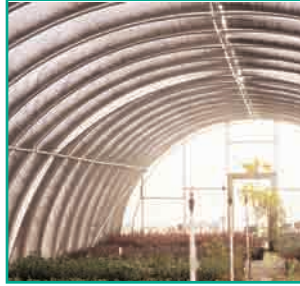
Application: After shade has been diluted with water, add recommended amount (see below) depending on the feel of adhesive desired.

Recommended Additions: Light Adhesive - Add 4 ounces of X-Tra Stick for each gallon of Kool Ray Ultra used. Mix thoroughly. **Medium Adhesion** - Add 8 ounces of X-Tra Stick for each gallon of Kool Ray Ultra used. Mix thoroughly. **Strong Adhesion** - Add 12 ounces of X-Tra Stick.

| Stock No. | Item | Color | Size | Price |
|--------------|------------------|-------|--------|---------|
| 225-1914000C | Kool Ray Classic | White | 1 gal. | \$21.34 |
| 225-1914005C | Kool Ray Classic | White | 5 gal. | \$95.88 |
| 225-1914010C | X-Tra Stick | White | 1 qt. | \$9.67 |
| 225-1914012C | X-Tra Stick | White | 1 gal. | \$24.70 |

Call for pricing and availability. Quantity discounts may be applicable. Large orders ship F.O.B. destination from factory. Crating charges apply.





BLACK WOVEN

DeWitt's woven shade is made from 100% polypropylene monofilament strands. It is UV stabilized to hold up under the most extreme solar conditions. Roll up and store when not in use to assure longevity. Standard widths may be combined to create larger widths or cut as necessary. Pricing will reflect standard widths. To order shade cloth, determine percent shade, width, length, and grommet spacing.

KNITTED

DeWitt's knitted shade cloth is made from 100% UV stabilized polyethylene. Its unique lock stitch construction allows customers to cut fabric without it unraveling. Custom widths may be created by attaching standard widths. To order simply determine percent shade, width and length. Attach with grommets. Available in colors.

DEWITT SHADE CLOTH

| Stock No. | Actual Shade | Standard Widths | Price |
|--------------|--------------|-------------------------------|---------|
| WOVEN | | | |
| 245-6SHAD30H | 30% Black | 10', 12' | \$0.137 |
| 245-6SHAD47H | 47% Black | 6', 10', 12', 15' | 0.147 |
| 245-6SHAD55H | 55% Black | 6', 10', 12', 15' | 0.154 |
| 245-6SHAD63H | 63% Black | 6', 10', 12', 15' | 0.168 |
| 245-6SHAD73H | 73% Black | 4', 6', 7.5', 10', 12.5', 15' | 0.183 |
| 245-6SHAD80H | 80% Black | 6', 8', 10', 12', 15' | 0.212 |

| Stock No. | Actual Shade | Standard Widths | Price |
|----------------|--------------|--------------------------------------|-------|
| KNITTED | | | |
| 2451105 | 30% Black | 6', 10', 12', 14', 20', 26', 32' | 0.100 |
| 2451110 | 40% Black | 6', 10', 12', 20', 26', 32' | 0.110 |
| 2451115 | 50% Black | 6', 10', 12', 20', 26', 32' | 0.132 |
| 2451120 | 60% Black | 6', 10', 12', 20', 26', 32' | 0.145 |
| 2451125 | 70% Black | 6', 8', 10', 12', 15', 20', 26', 32' | 0.158 |
| 2451130 | 80% Black | 6', 8', 10', 12', 20', 26', 32' | 0.188 |
| 2451135 | 90% Black | 6', 8', 10', 12', 20', 26', 32' | 0.192 |
| 2451220 | 50% White | 6', 10', 12', 20', 26' | 0.183 |
| 2451225 | 60% Green | 6', 10', 12', 20', 26', 32' | 0.167 |

| FABRICATION CHARGES | |
|---|------------------|
| Set Up Charge for panels 300 sq ft or under | \$16.67/panel |
| Set Up Charge for panels 301 - 700 sq ft | 13.34/panel |
| Set Up Charge for panels 701 - 1000 sq ft | 10.00/panel |
| Set Up Charge for panels 1001 & Up | None |
| Cut Down | 0.20/linear foot |
| Hem/Seam (to attach standard widths) | 0.20/linear foot |
| Taped Edges (recommended for woven, optional for knitted) | 0.20/linear foot |
| Brass Grommets (requires taped edges) | 0.167/each |
| Clip-Its 25/pack (for knitted shade only) | 4.25/pack |

Minimum order \$75.00 freight prepaid on orders \$300.00 and above otherwise FOB Missouri. All shade cloths are made to order. Please allow minimum 7 days.

ALUMINET REFLECTIVE SHADE CLOTH

THERMAL SCREEN



Aluminet thermal screens offer superior year round climactic protection for flowers, potted plants and vegetables. Aluminet acts like a mirror as its unique aluminized screens reflect

unwanted sunlight and harmful radiation heat during summer and preserve the heat during winter. When used as a rollup curtain on the inside of the greenhouse, Aluminet reflects out the unwanted radiation and heat during the day. During cooler temperatures, it preserves the heat inside the greenhouse. The open structure of the screen avoids condensation and creates a cooler climate, making it excellent for use in high humidity conditions. Due to the superior reflectability and light weight of Aluminet, it is the perfect cloth to cover the outside of a greenhouse instead of standard black shade cloth. Test results have shown Aluminet will lower inside greenhouse temperatures 8-10° when compared to traditional black shade. The screen does not unravel with wear and can be cut and sewn at any angle with no fraying or damage.



| Stock No. | Actual Shade | Standard Widths | Price Per Sq. Ft. |
|------------------------------------|--|-----------------------|-------------------|
| 245-100025 | 30% | 6.5', 13', 19.5', 26' | .317 |
| 245-100050 | 40% | 7', 14', 21', 28' | .317 |
| 245-100100 | 50% | 7', 14', 21', 28' | .317 |
| 245-100200 | 60% | 7', 14', 21', 28' | .35 |
| 245100300 | 70% | 7', 14', 21', 28' | .383 |
| Stock No. | Description | Price | |
| SPECIAL FABRICATION CHARGES | | | |
| 245-100300 | Plastic Hinged Fasteners | \$2.83 each | |
| 2451101 | Brass Grommets | .183 each | |
| 2451102 | Seam Charge - attach standard widths | .267/linear ft. | |
| 2451103 | Taped Edges black (for brass grommets) | .267/linear ft. | |

POWER PULL SHADE®/HEAT RETENTION SYSTEM

Reduces energy costs, summer through winter, while increasing plant quality and worker comfort.

for new construction or retrofitting in existing greenhouses, Wadsworth systems are flexible in design and can be easily installed without moving much equipment.

THERE ARE THREE TYPES OF TRUSS-TO-TRUSS SYSTEMS:

- Slop/Flat/Slope Profile (shown)
- Slope/Slope Profile
- Flat/Horizontal Profile

ENVIRONMENTAL FEATURES:

- Control temperature levels necessary for plant growth
- Heat retention - Helps maintain unit form temperatures in winter months

POWER PULL FEATURES

- Quiet and dependable operation - minimal friction
- Easy to maintain
- Monofilament stationary line - minimal strain on structure
- Less interference with equipment
- Built-in safety limits
- Positive drive rack & pinion system, no cable to re-tension
- Slow moving system for better management of cold air flow instead of dump
- Flexible design, easy installation for new construction or retrofitting
- Durable fabric, resistant to UV, heat

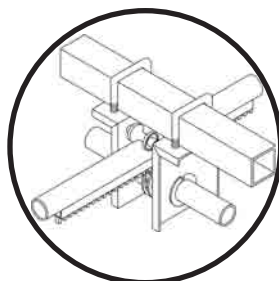
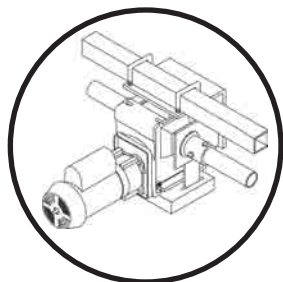
POWER PULL BENEFITS

- 30% reduction in energy consumption
- Pays for itself
- Cools 10-15°F
- Provides shade
- Controls day length
- Creates blackout environment
- Reduces humidity and condensation
- Improves plant quality
- Increases customer & worker comfort
- Reduces labor costs, no more dangerous white washing

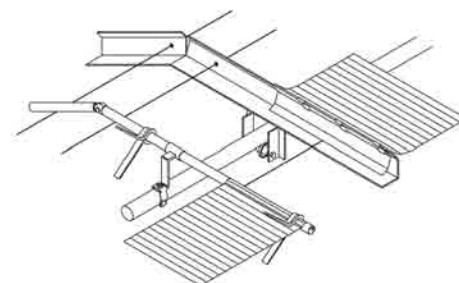


Maintaining the Climate for Growth

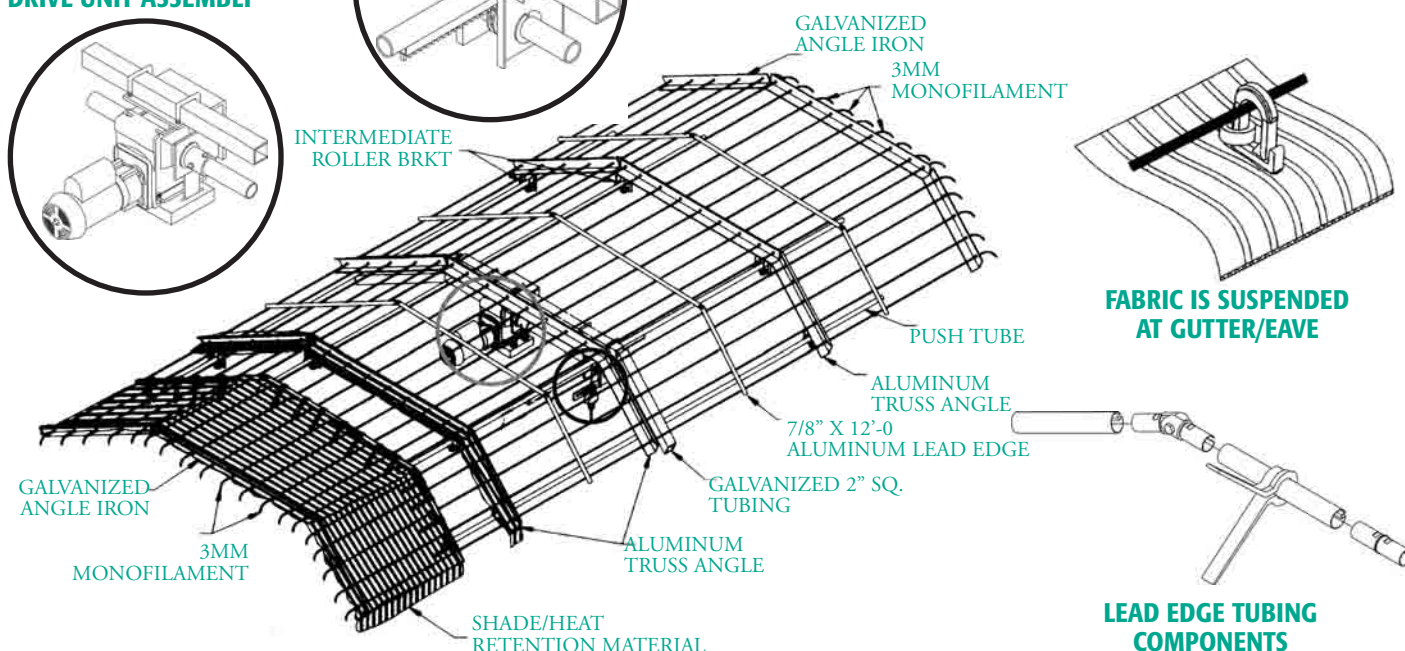
DRIVE UNIT ASSEMBLY



RACK & PINION CHASSIS ASSEMBLY



INTERMEDIATE TRUSS SECTION OF SYSTEM



CALL OUR OFFICE FOR PRICES AND FURTHER INFORMATION.



VECTORVIRUS & NO-THRIPS INSECT SCREEN

Given the increased problems and costs associated with pesticides, no modern greenhouse should be without the proper insect barrier. Green-Tek Insect Screens, correctly installed, prevent insect penetration, yet provide maximum possible air flow, essential for optimal crop yields.

Regardless of the coolant and ventilating system that you use, you need to consider insect screen. Screening intake vents will provide dramatic results, but all greenhouse openings, including service doors (which should incorporate double screened doors), should be screened for best results.

Vectorvirus Insect Screen excludes Whitefly, Aphids, Leafminers and up to 80% of Western Flower Thrips in field applications. Several years of laboratory and field testing have resulted in a patented screen structure that maximizes air circulation, while keeping pests out. Special equipment has been developed to ensure hole size accuracy, and a 0.24 mm diameter yam is used, which is 45% stronger with greater UV resistance, compared to 0.20 mm diameter standard yams.

No-Thrips Insect Screen is designed to exclude Thrips and other pests, and is the material of choice where Thrips exclusion is priority.



| Insect Pest to Be Excludes | Insect Size - Inch (µ) | Screen Type To Use | Screen Hole Size - Inch (µ) | Performance |
|----------------------------|------------------------|--------------------|-------------------------------|-------------|
| Leafminer | 0.025 (640 µ) | Vectorvirus | 0.0105 x 0.0322 (266 x 818 µ) | 100% |
| Melon Aphid | 0.013 (340 µ) | Vectorvirus | 0.0105 x 0.0322 (266 x 818 µ) | 100% |
| Whitefly | 0.018 (462 µ) | Vectorvirus | 0.0105 x 0.0322 (266 x 818 µ) | 100% |
| Western Flower Thrips | 0.0075 (192 µ) | No-Thrips | 0.0059 x 0.0059 (150 x 150 µ) | 100% |

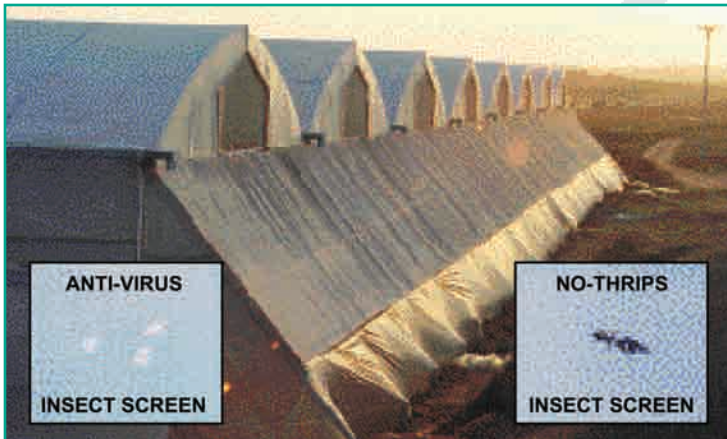
| Specifications | Vectorvirus | No-Thrips |
|--------------------|--|--|
| Construction | 50 x 24 Mesh | 81 x 81 Mesh |
| Opening Size | 0.0105" x 0.0322" | 0.0059" x 0.0059" |
| Thread Size | 0.24 mm | 0.15 mm |
| Weave | 1/1 | 1/1 |
| Weight | 0.33 lbs./yd2 | 0.216 lbs./yd2 |
| Shade Value | 20% | 33% |
| Light Transmission | 80% | 66% |
| Standard Widths | 43, 78, 118, 141 inches Custom widths available. | 39, 78 and 133 inches Custom widths available. |
| Length | Orders cut to size. Max length 656ft. | Orders cut to size. Max length 328ft. |
| UV Resistance | Tested to equivalent of five years field experience. | Tested to equivalent of five years field experience. |

TECHNICAL DESCRIPTION

Screening is made of UV stabilized, high tensile-strength, round polyethylene monofilaments. This lightweight, transparent, and easy to install screen can be easily cleaned with power sprayers. The unique structure results in maximized air circulation to enable higher yields. Even if mechanically punctured the screen will keep its strength and stability.

| Stock No. | Description | Price/Sq. ft. |
|-----------|-------------|---------------|
| 24531010 | Vectorvirus | \$.768 |
| 24531015 | No-Thrips | \$.919 |

**FOB Wisconsin*



GROWER TIPS

When using either a "Vectorvirus" or "No-Thrips" insect screening in a mechanically ventilated greenhouse it is required to have more square footage of screening that the opening of the inlet shutters because of the very tight weave which restricts air flow through the screen. An approximate rule of thumb is when using the "Antivirus" screening determine the opening area of your inlet shutter and multiply by 2 to arrive at the square footage of screening needed. When using "No-Thrips" insect screening multiply the area of inlet shutters and multiply by 3-4 times to arrive at the area of square footage required.

The new industry standard in reflector performance. At nearly 90% efficiency, the GLX is delivering more usable light energy than any other reflector in the industry. This stellar performance allows greenhouse growers to significantly reduce the number of fixtures needed for growing success. The GLX and GLS light pattern ensures consistent and uniform plant response over the greatest area. MIRO5 aluminum construction - the highest reflectivity available - delivers broad, even coverage from a minimal fixture footprint.



GLX SERIES REFLECTOR

- Ideal for medium to high clearance situations.
- Accepts 400 & 1000 watt MH and 1000 watt HPS.



REMOTE BALLAST OPTION FOR BOTH GLX & GLS SERIES REFLECTOR

Save on installation costs and minimize weight on your structure. Size: 11.25" L x 8.25" W x 9" H; Weight: 21-40 pounds.



GLS SERIES REFLECTOR

- Ideal for low clearance situations.
- Accepts 400, 430, and 600 watt HPS.

THE BEAMFLICKER™

A single, centrally-located, stationary fixture provides enough photoperiod control light for an entire greenhouse.

ADVANTAGES OF THE BEAMFLICKER™:

- **Cost effective:** 400 watt fixture can provide enough light for up to a 30 by 90 foot greenhouse.
- **Efficient:** Uses a high-pressure sodium lamp - the most efficient light source for this purpose.
- **Reliable:** Only the reflector moves, fixture housing is stationary.
- **Easy to install:** Uses only 470 watts (120 volts), and plugs right in so heavy-duty wiring is not necessary.

Sunlight

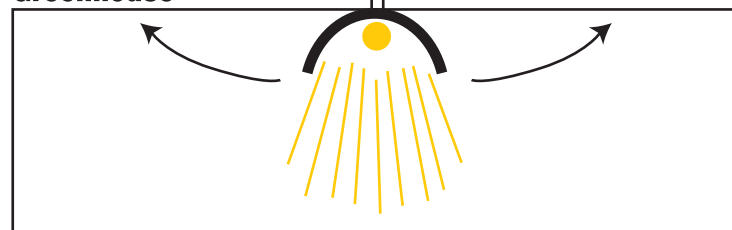


Photo Cell

or

Time Clock

Greenhouse



An Oscillating parabolic reflector with a high-intensity sodium lamp flicks beams of light from one end of the greenhouse to the other, providing intermittent light across the entire area.



400 watt (or 600 watt) **sodium remote ballast assembly** (multi-volt capable) prewired with 8' power cord (120 volt).

EACH BEAMFLICKER SYSTEM INCLUDES:

- Mirrored aluminum parabolic reflector.
- Beamflicker cast aluminum housing with 8-foot grounded power supply cord (3 watts/120 volts).
- High intensity sodium lamp prewired with 15' cord set (600 watt 10').
- Instructions included.

Call for availability and pricing.

